



Texas AgriLife Extension Service

Hopkins Dairy Notes

TEXAS A&M
AGRI LIFE
EXTENSION

Special points of interest:

- Fall Dairy Conference offering 4 DOPA credits!
- Private applicator training for new applicant scheduled for November 7, 2012. CEU at the Regional Civic Center November 7, 2012.

DOPA credits in Sulphur Springs, October 31, 2012. Dr. Mario Villarino, County Extension Agent in Hopkins



The year has come by with enough rain and activities at the Hopkins County Extension Office to keep us busy enough. This year, we have planned The Fall Dairy Conference, a 4 DOPA credit session with support of the Southwest Dairy Museum for October 31, 2012 starting at 10:00 am. The session will include some fundamental information in nutrient management from NRCS, soil nutrient management for winter crops and the benefits of rotational grazing as nutrient management tools for the grazing dairy. As you are fully aware, the cost of grain keeps increasing. An alternative that many dairy farmers are looking into is benefit of the high humidity levels we usually get in Hopkins County to raise forage and graze cattle. The Jerseys seem to be a good option for grazing dairies when the milk get sold for cheese making, and in places with high land values since more cows can be kept per acre than other breeds.

Lately I have seen land in Hopkins county sold for horse farming. There is a big horse facility and breeding farm coming in Como. You might have a new neighbor keeping horses instead of cows before too long. Some of your forage production could be sold to horse farms if you feel like this could be of economical benefit to you.

We are beginning a fee based wild pig control program with support of our volunteers. If you have problems with wild hogs, give me a call, we might be able to help you with educational programs or services. The wild pig program will monitor wild hog populations for you and trap only when appropriate.

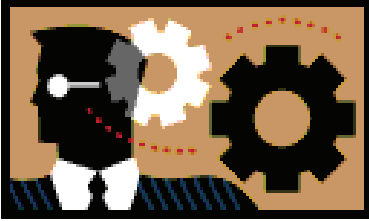
I am looking forward to see you at our Fall Dairy Conference or sooner!

Mario Villarino

Dr. Mario Villarino
County Extension Agent
Texas AgriLife Extension
Service– Hopkins County

You can always check this and older newsletters by going to: [www. Hopkins-tx.edu/newsletters](http://www.Hopkins-tx.edu/newsletters)

How it works: Fodder



A new application for an old technique is taking some interest on the dairy industry. The hydroponic germination of barley grain into a sprouted material called fodder. The system, widely utilized in Australia, claims to increase green volume from grain. The volume gets increased 6 times in 6 days. For every 50 kg of barley, 280 kg of fodder are produced. This gets accomplished by controlling humidity and temperature in a growing chamber. Of course, the volume gets increase by increasing the water content of the seed, so most of the volume gain is moisture. The manufactures claim that digestibility increases from 30% to 80%. At this time, several systems are available in the American market. As today, there are not scientific evaluations of the systems in Texas.

Dairy workers training: A.I training

A new partnership between Genex, Pfizer and Texas A&M AgriLife Extension Services is bringing the Genex A. I. training to our Hopkins County dairies at very reasonable cost. The training, normally a \$450 seminar is a two day hands-on training to be conducted at a local dairy. Instructors will provide instruction in a classroom during the first day and continue the wet laboratory session at a local dairy. Individual workers transportation will be required. The cost of the training including lunch will be \$50 per person. This is a two day training. Please call the Hopkins County Extension Office at 903-885 –3443 to reserve a place. Space is limited!

Coming UP!:

- **Two day A.I. Training Program. September 27 and 28. Hopkins County Extension Office. 8:00 am. Cost \$50 per person. Lunch included.**
- **Fall Dairy Conference, Southwest Dairy Museum, October 31, 2012. 4 DOPA credits. Cost \$10.00. Lunch included.**
- **Pesticide Private Applicator Training and Exam, November 7, 2012, Hopkins County Extension Office 8:00 am. Exam included after the training. Cost \$10.00 No lunch included.**
- **Pesticide Private Applicator CEU, November 7, 2012, Hopkins County Regional Civic Center, 9:00 am. 3 IPM, 2 Gen PAT CEU's. \$25.00 Lunch included.**

Educational programs of the Texas AgriLife Extension Service are open to all people without regard to race, color, sex, disability, religion, age or national origin. The Texas A&M University System, U.S. Department of Agriculture and the County Commissioner Courts of Texas Cooperating.