



Texas AgriLife Extension Service

Hopkins Dairy Notes



Greetings and Happy 2012! DOPA credits in Emory February 22, 2012. Dr. Mario Villarino

Special points of interest:

- North East Texas Forage Conference offering 2 DOPA credits!
- Private applicator training for new applicant scheduled for March 28, 2012.



2011 brought many learning experiences for us as a county. The most remarkable to me was to try to compensate for our lack of rain and getting used to sky-high hay and corn prices. As part of our programming for 2012, we are looking into incorporating DOPA credits in more than one session this year. I believe you will benefit from learning more than manure management and if you can earn some of the credits in more than one event, your schedule will be more flexible. So, we are offering now 2 DOPA credits in our East Texas Forage Conference on February 22, 2012 at the Rains County Extension Office starting at 10:00 am. Hopkins, Wood and Rains Counties are part of the North East Texas DOPA region. You should also benefit from getting 3 CEU's if you are a private pesticide applicator. I am including the conference flyer on this mailing. Our dairy producers day is getting planned for May 2, 2012. We are looking into bringing topics related to heat stress reproductive management, antibiotics residues and DOPA topics (2 DOPA credits), more details in our next edition of Hopkins Dairy Notes.

NEW free service: Small grain aphids identification in Hopkins County

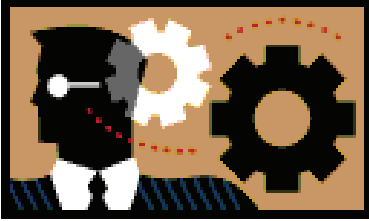
Recently I got several calls on small grain pests, and more specific in aphid infestations. Aphids are very small bugs that tend to accumulate in leaflets of small grain crops. Some aphids infestations are devastating while others only cause small damage to crops. Knowing the specific type of aphid affecting your crop is important so you can make

an appropriate decision of treatment or not. Pest identification is the fundamental principle of Integrated Pest Management. Colorado State University has released a publication related to aphids and also the methods for identification. A preliminary identification of the aphid pest can now be done at the Hopkins County Extension Office with short time turn around and no cost for you. A digital picture and confirmation can be done by a specialist if needed also.

Dr. Mario Villarino
County Extension Agent
Texas AgriLife Extension
Service– Hopkins County

You can always check this and older newsletters by going to: [www. Hopkins-tx.edu/newsletters](http://www.Hopkins-tx.edu/newsletters)

Types of Employees



The work performed on all dairies is very similar, but a larger dairy can allow an employee to do fewer tasks than can a smaller dairy. This employee specialization decreases the time needed to train new employees and achieves a higher competence level with the assigned activity. Organizing compatible functions into specific jobs, locating them in your organizational chart and writing meaningful job descriptions should enable you to determine the types of workers that you need.

Dairy Workers training taking a new format

Last year our efforts to provide Hispanic workforce training were focus on classroom settings. To add more opportunity to those workers in tight schedules we have change the format and place of our trainings and we will be travelling to specific dairies who request the trainings. Our topics of training will also match what is wanted in the particular dairy based on farm manager or owner. Please contact me at 903-885-3443 or send me an e-mail with your workers training needs and I will prepare and teach the material in Spanish to your workers. Also, the package will include lunch delivered at the dairy. The cost of the training including lunch will be \$15 per person.

Coming UP!:

- **North East Texas Forage Conference February 22, 2012 at the Rains County Extension Office, \$15.00 lunch included. 2 DOPA credits, 3 CEU for private applicators.**
- **Pesticide Private Applicator Training and Exam, March 28, 2012, Hopkins County Extension Office 8:00 am. Exam included after the training. Sub Sandwich Lunch provided.**

Educational programs of the Texas AgriLife Extension Service are open to all people without regard to race, color, sex, disability, religion, age or national origin. The Texas A&M University System, U.S. Department of Agriculture and the County Commissioner Courts of Texas Cooperating.